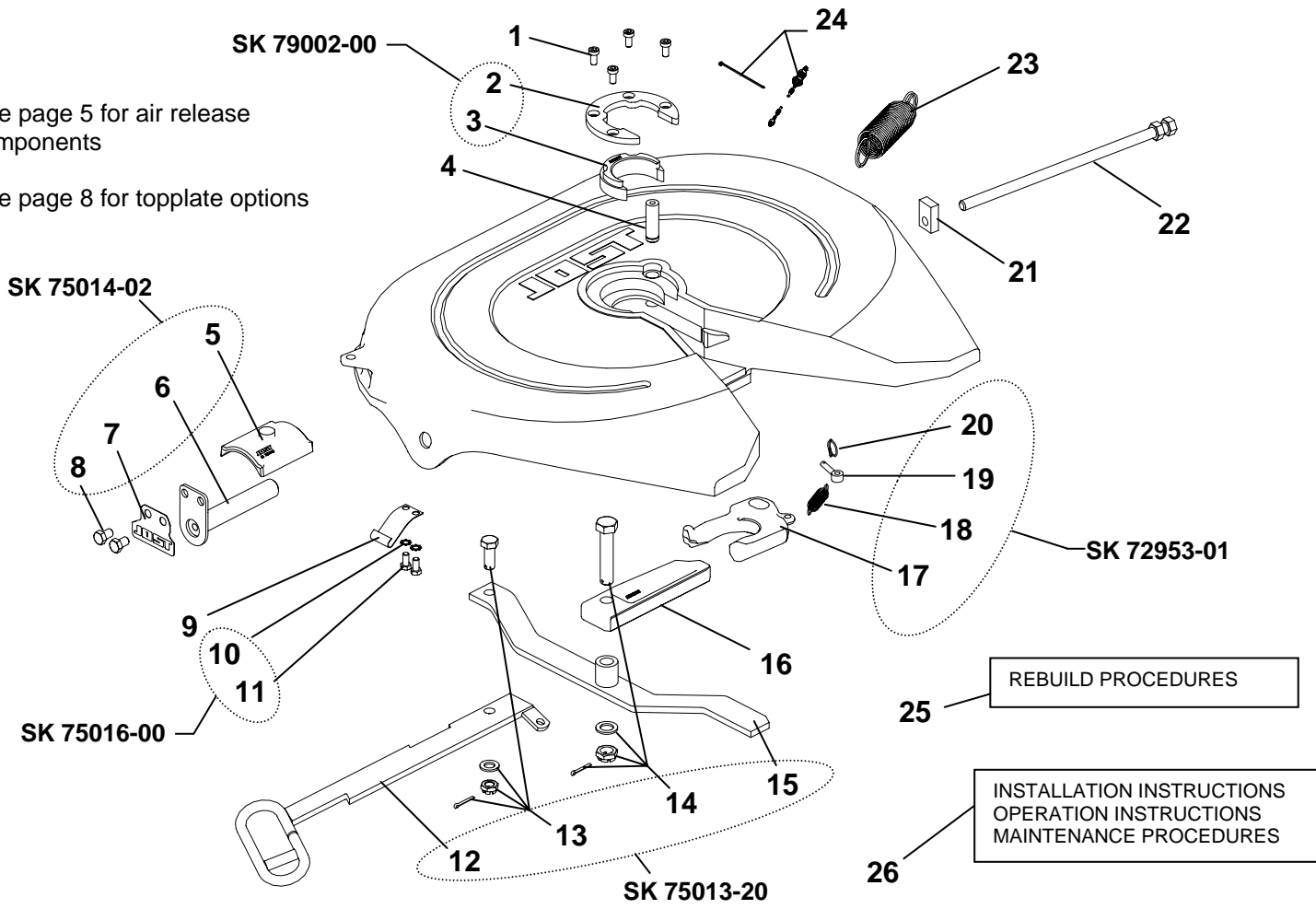


See page 5 for air release components

See page 8 for topplate options



Item	Description	Part No.	Item	Description	Part No.
1	Cushion ring bolt	SK 73121-55	14	Locking bar bolt assembly	SK 73221-01
2	Retainer	SK 3105-93	15	Lever with bushing	SK 3105-140
3	Cushion ring insert	SK 3105-92	16	Locking bar	SK 3205-06
4	Lock jaw pivot pin	SK 72106-67	17	Lock jaw	SK 1489LZ
5	Collar	SK 73105-95	18	Lock jaw spring	SK 847
6	Bracket pin	SK 73104-05	19	Eye bolt	SK 2106-69
7	Tab washer	SK 73104-47	20	Ring	SK 2106-70
8	Hex bolt	SK 73121-28B	21	Guide piece	SK 73205-07
9	Plate spring	SK 70993-00	22	Adjusting screw with hex nut	SK 3105-151
10	External tooth lock washer	SK 70301-00	23	Double tension spring	SK 3105-20
11	Hex bolt	SK 73121-28B	24	Lubricating kit	SK 3108-02
12	Release handle	SK 73105-15	25	Rebuild Procedures	LT JSK37-03
13	Pivot bolt assembly	SK 71513	26	Info Pack	SK 75020-00

Major Rebuild Kit		Minor Rebuild Kit (see pg. 31)	
Complete Topplate – L.H. Only Includes Items 1-25 above		Cushion and Lock Jaw – L.H. Only Includes Items 1-4, 17-20 & 24 above	
JOST Order Number	Weight	JOST Order Number	Weight
SK 73221-52Z	33 lbs.	SK 73221-50Z	6 lbs.