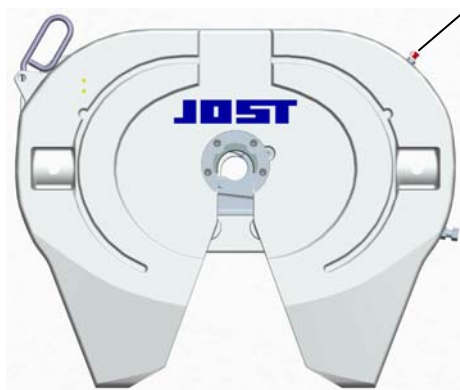




- 1. FAILURE TO FOLLOW THESE INSTRUCTIONS COULD CAUSE A HAZARDOUS CONDITION!**
- 2. PERFORM ALL MAINTENANCE WITH TRACTOR UNCOUPLED FROM TRAILER.**
- 3. ALL PROCEDURES MUST BE PERFORMED BY QUALIFIED PERSONNEL.**

A. LUBRICATION (as required):

1. Lubricate the kingpin lock using a hand pump grease gun through the grease zerk provided on the skirt of the fifth wheel (see figure 1).
2. Apply a lithium-based grease with EP additive (extreme pressure) to the trailer contact surface of the fifth wheel.
3. Apply a light oil to all moving parts.
4. For sliding fifth wheels spray diesel fuel on slide path of the base plate.



Grease here using a hand grease gun.

CAUTION: DO NOT USE A POWER GREASE GUN. THE PRESSURE WILL DAMAGE THE LUBE LINE.

FIGURE 1

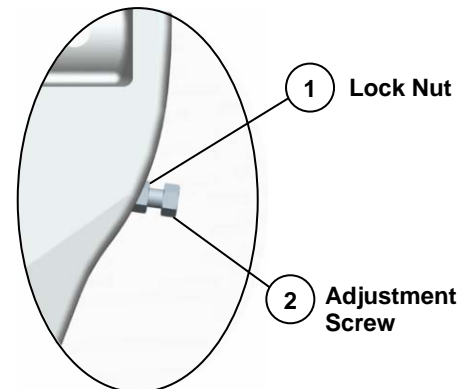
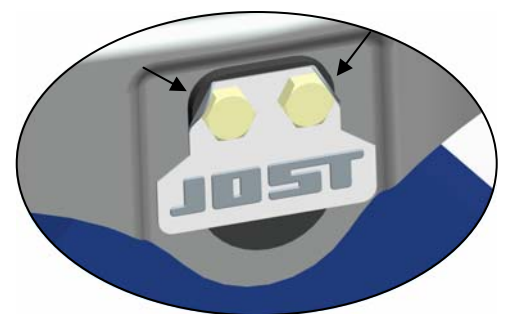


FIGURE 2

B. INSPECTIONS AND ADJUSTMENTS:

(Perform the following every 3 months or 30,000 miles)

1. Inspect the mounting – repair or replace any missing or damaged fasteners or broken components.
2. Inspect bracket pin bolts, make sure locking tabs are properly securing the bolts in place (see figure #3).
3. Inspect the fifth wheel for bent, worn or broken parts. Replace with genuine **JOST** parts.
4. Inspect the retractable handle – handle must freely extend and retract through the entire range available. Replace with a new retractable handle if damaged.

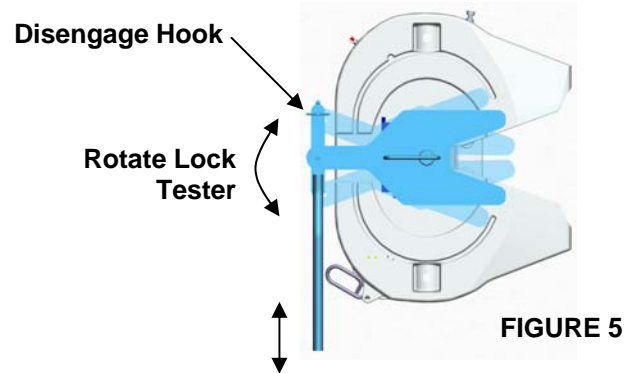
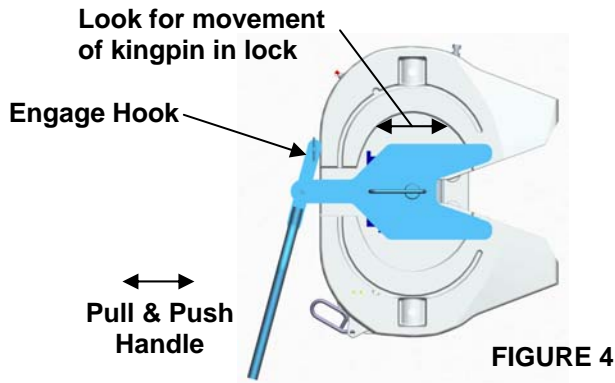


Locking tabs properly securing bolts

FIGURE 3

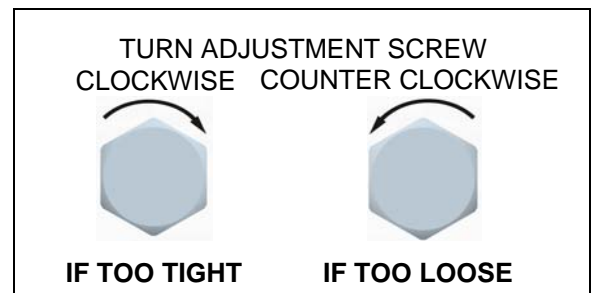
5. **Check adjustment** - Lock and unlock several times using a lock tester. Check that the locking mechanism functions properly (see operating procedures).

- a. **The lock is properly adjusted if:** The wheel locks and unlocks easily each time and the lock tester rotates freely.
- b. **The lock is too loose if:** You feel fore-aft play when pulling and pushing on the lock tester handle (see figure 4)
- c. **The lock is too tight if:** The lock tester does not rotate freely when attempting to rotate it in the lock. (See figure 5)



6. **Correct improper adjustment.**

- a. **IF IT IS TOO TIGHT:** loosen the jam nut (see figure 2 item 1), turn the adjustment screw (see figure 2 item 2) clockwise one full turn and reset the jam nut. Then, lock and unlock several times, repeat if necessary.
- b. **IF IT IS TOO LOOSE:** loosen the jam nut, turn the adjustment screw counterclockwise one full turn and reset the jam nut. Then, lock and unlock several times, repeat if necessary.

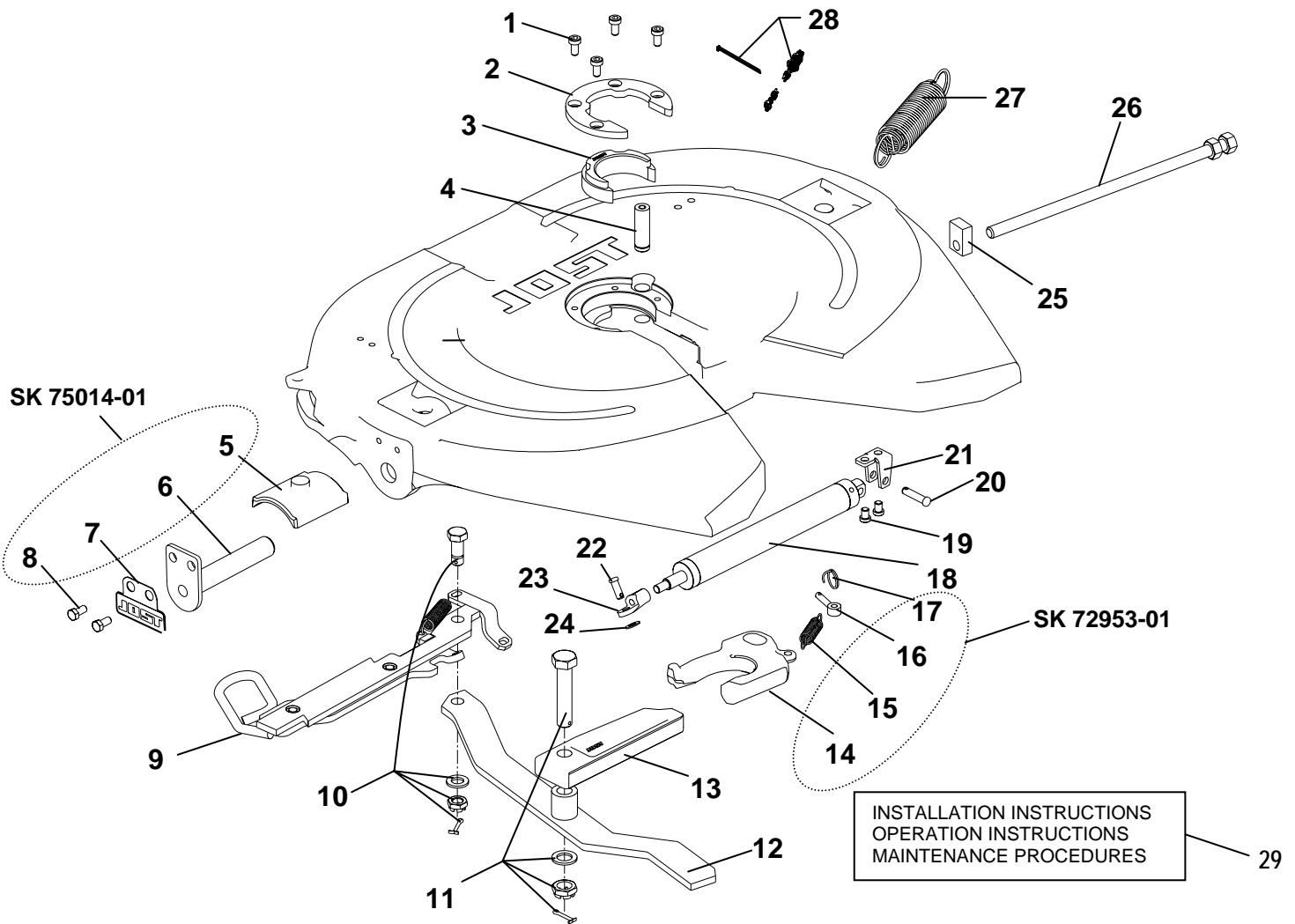




WARNING

DO NOT USE ANY FIFTH WHEEL THAT FAILS TO OPERATE PROPERLY!

PARTS LIST



Item	Description	Part No.	Item	Description	Part No.
1	Cushion ring bolt	SK-73121-55	16	Eye bolt	SK-2106-69
2	Retainer	SK-3105-93	17	Ring	SK-2106-70
3	Cushion ring insert	SK-3105-92	18	Air cylinder	SK-79020-04
4	Lock jaw pivot pin	SK-72106-67	19	3/8-16 x 1/2 lg. Low head screw	SK-70209-00
5	Collar	SK-73105-95	20	3/8 dia. Clevis pin (long)	SK-70105-00
6	Bracket pin	SK-73104-05	21	Cylinder mount	SK-79020-05
7	Tab washer	SK-73104-47	22	3/8 dia. Clevis pin (short)	SK-70105-01
8	3/8-16 x 3/4 lg. Hex bolt	SK-73121-28B	23	Cylinder clevis	SK-79020-06
9	Retractable handle w/spring	SK-75016-04	24	Flat washer	SK-70302-01
10	Pivot bolt assembly	SK-71513	25	Guide piece	SK-73205-07
11	Locking bar bolt assembly	SK-73221-01	26	Adjusting screw with hex nut	SK-3105-151
12	LH Lever w/chamfer	SK-3105-140	27	Double tension spring	SK-3105-20
13	Locking bar	SK-3205-06	28	Lubricating kit	SK-3108-02
14	LH Lock jaw	SK-1489LZ	29	Info pack	SK 75020-14
15	Lock jaw spring	SK-847			