



- 1. FAILURE TO FOLLOW THESE INSTRUCTIONS COULD CAUSE A HAZARDOUS CONDITION!**
- 2. PERFORM ALL MAINTENANCE WITH TRACTOR UNCOUPLED FROM TRAILER.**
- 3. ALL PROCEDURES MUST BE PERFORMED BY QUALIFIED PERSONNEL.**

A. LUBRICATION (as required):

1. Apply a lithium-based grease with EP additive (extreme pressure) to the trailer contact surface of the fifth wheel.
2. Apply a light oil to all moving parts.
3. For sliding fifth wheels spray diesel fuel on slide path of the base plate.

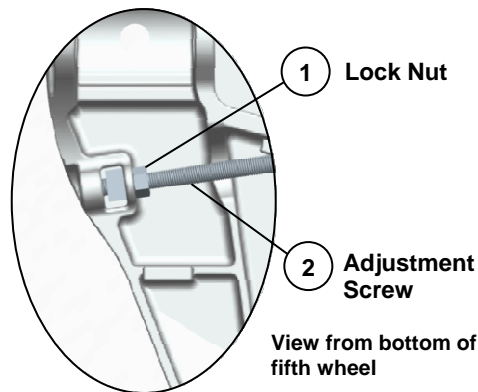
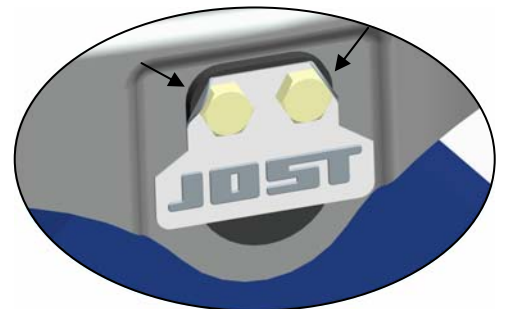


FIGURE 1

B. INSPECTIONS AND ADJUSTMENTS:

(Perform the following every 3 months or 30,000 miles)

1. Inspect the mounting – repair or replace any missing or damaged fasteners or broken components.
2. Inspect bracket pin bolts, make sure locking tabs are properly securing the bolts in place (see figure #2).
3. Inspect the fifth wheel for bent, worn or broken parts. Replace with genuine **JOIST** parts.

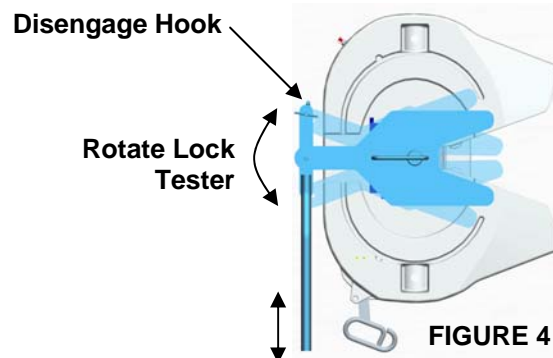
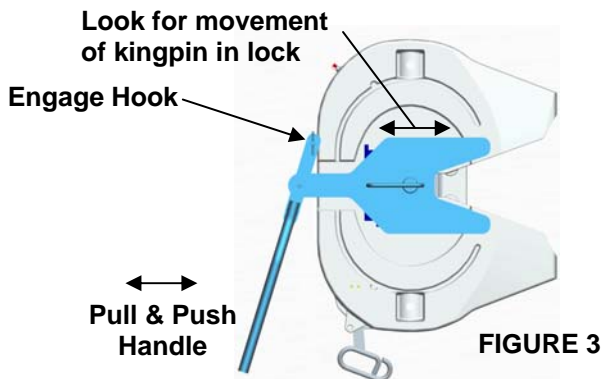


Locking tabs properly securing bolts

FIGURE 2

4. **Check adjustment** - Lock and unlock several times using a lock tester. Check that the locking mechanism functions properly (see operating instructions).

- a. **THE LOCK IS PROPERLY ADJUSTED IF:**
The wheel locks and unlocks easily each time and the lock tester rotates freely.
- b. **THE LOCK IS TOO LOOSE IF:** You feel fore-aft play when pulling and pushing on the lock tester handle (see figure 3)
- c. **THE LOCK IS TOO TIGHT IF:** The lock tester does not rotate freely when attempting to rotate it in the lock. (See figure 4)



5. **Correct improper adjustment**

a. **IF IT IS TOO LOOSE:**

1. Insert 5/16 Allen wrench into adjustment rod (item 2, Figure 2).
2. Loosen jam nut (item 1, figure 2).
3. Turn Allen wrench counter-clockwise one turn and set the jam nut.
4. Unlock and lock using lock tester, check for play and readjust as required.

b. **IF IT IS TOO TIGHT:**

1. Follow procedure above but turn Allen wrench clockwise.

 WARNING	DO NOT USE ANY FIFTH WHEEL THAT FAILS TO OPERATE PROPERLY!
---	---

SLIDING FIFTH WHEEL MECHANISM **INSPECTION AND ADJUSTMENT**

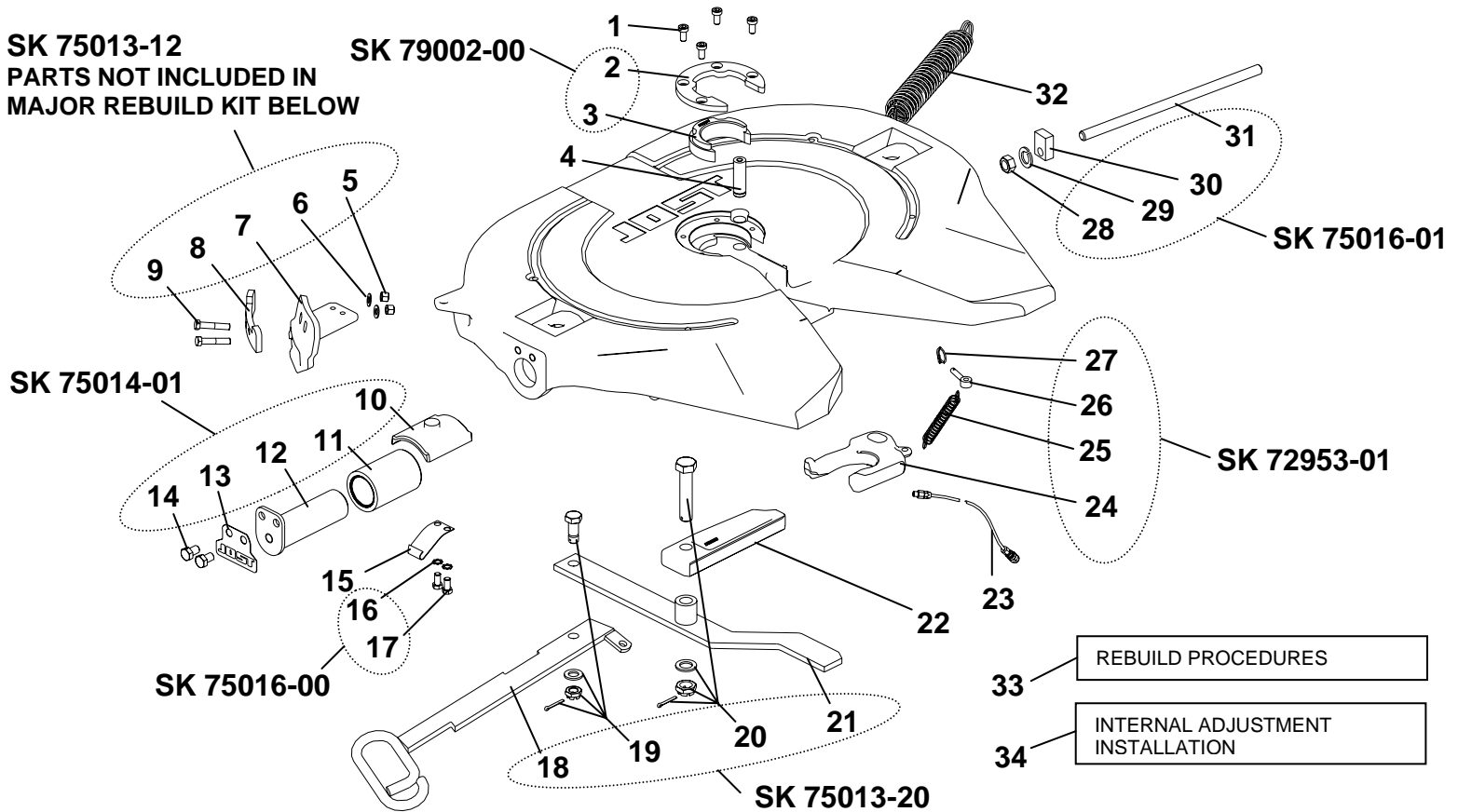
A. Inspection

1. Inspect the bracket for any cracks or missing and damaged parts.
2. Inspect the locking plungers for full engagement.
3. Check the locking mechanism for proper operation.
 - a. If plungers won't release – check air cylinder or plunger adjustment.
 - b. If plungers are loose – check plunger adjustment or plunger springs for proper compression. Replace if required.

B. Adjustment

1. The outboard slider assembly requires no adjustment. If the plungers are loose inspect and replace locking mechanism parts as required.
2. The Inboard slider is adjustable for frame width as well as plunger engagement. For adjustment, refer to the Fifth Wheel Installation Instructions (Jost Publication LT SK37U-01).

PARTS LIST



Item	Description	Part No.	Item	Description	Part No.
1	Cushion ring bolt	SK 73121-55	18	Release handle	SK 73105-15
2	Retainer	SK 3105-93	19	Pivot bolt assembly	SK 71513
3	Cushion ring insert	SK 3105-92	20	Locking bar bolt assembly	SK 73221-01
4	Lock jaw pivot pin	SK 72106-67	21	Drop handle release arm	SK 79024-03
5	3/8-16 Lock nut	SK 70401-02	22	Locking bar	SK 3205-06
6	Flat washer	SK 70302-05	23	Lubricating kit	SK 73108-02
7	Drop handle guide	SK 79024-02	24	Lock jaw	SK 1489LZ
8	Cover plate	SK 79024-01	25	Lock jaw spring	SK 847
9	3/8-16 x 2" lg. Hex bolt	SK 70202-14	26	Eye bolt	SK 2106-69
10	Collar	SK 3105-95	27	Ring	SK 2106-70
11	Bushing	SK 2905-94	28	Jam nut	NT 0000201
12	Bracket pin	SK 79011-03	29	Lock Washer	SK 70303-63
13	Tab washer	SK 73104-47	30	Guide piece	SK 73205-07
14	1/2-13 x 3/4 lg. Hex bolt	SK 70202-15	31	Internal Adjusting screw	SK 79010-02
15	Drop handle plate spring	SK 70993-01	32	Double tension spring	SK 3105-20
16	External tooth lock washer	SK 70301-00	33	Rebuild Instructions	LT JSK37-03
17	3/8-16 x 3/4 lg. Hex bolt	SK 73121-28B	34	Internal Adjustment Installation	LT JSK37-06

Major Rebuild Kit		Minor Rebuild Kit	
Complete Topplate - L.H. Only Includes Items 1-4 & 10-34 above		Cushion and Lock Jaw - L.H. Only Includes Items 1-4 & 23-27 above	
JOST Order Number	Weight	JOST Order Number	Weight
SK 75013-11	33 lbs.	SK 75013-07	6 lbs.